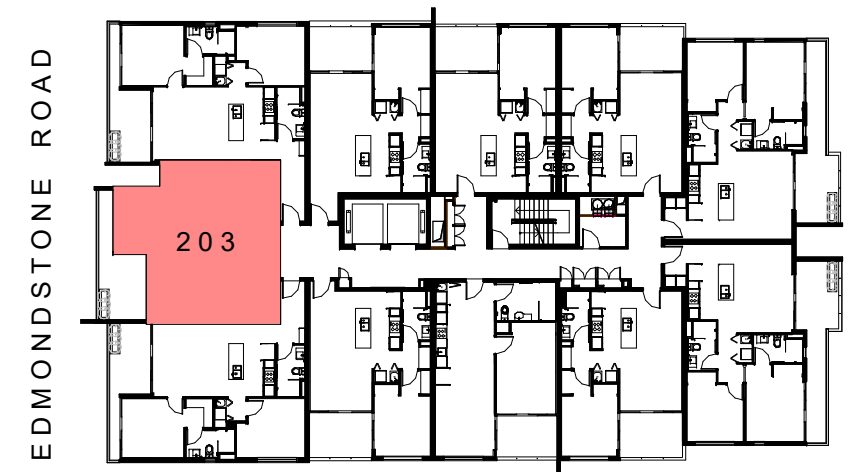


# PERRY HOUSE



APARTMENT NO.	FLOOR AREA	BALCONY	TOTAL
APART. 203	63.9m <sup>2</sup>	13m <sup>2</sup>	76.9m <sup>2</sup>
APART. 303	63.9m <sup>2</sup>	13m <sup>2</sup>	76.9m <sup>2</sup>
APART. 403	63.9m <sup>2</sup>	13m <sup>2</sup>	76.9m <sup>2</sup>
APART. 503	63.9m <sup>2</sup>	13m <sup>2</sup>	76.9m <sup>2</sup>
APART. 603	63.9m <sup>2</sup>	13m <sup>2</sup>	76.9m <sup>2</sup>
APART. 703	63.9m <sup>2</sup>	13m <sup>2</sup>	76.9m <sup>2</sup>

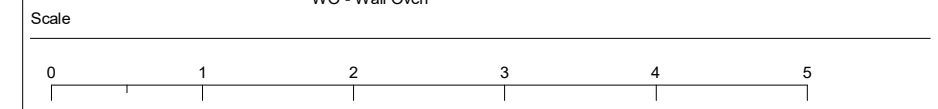


Key Plan LEVEL 2-4

Apartment Type	Configuration
<b>TYPE 2B-7</b>	<b>2 bed, 1 bath</b>

Legend

DW - Dishwasher	LIN - Linen
F - Fridge Cavity	P - Pantry
L - Laundry	R - Robe
	WO - Wall Oven



Disclaimer: While every care been taken in the preparation of this plan, the particulars and information in it are not to be constructed as containing any representation upon which an interested party is entitled to rely. All illustrations, drawing and photographs are for professional presentation purposes, are indicative only and not necessarily to scale. All information and material is subject to change without notice. All furniture is shown to indicate special arrangements only, and is not to be provided by the developer. Areas calculated according to Property Council of Australia 'method of measurement for residential property'.