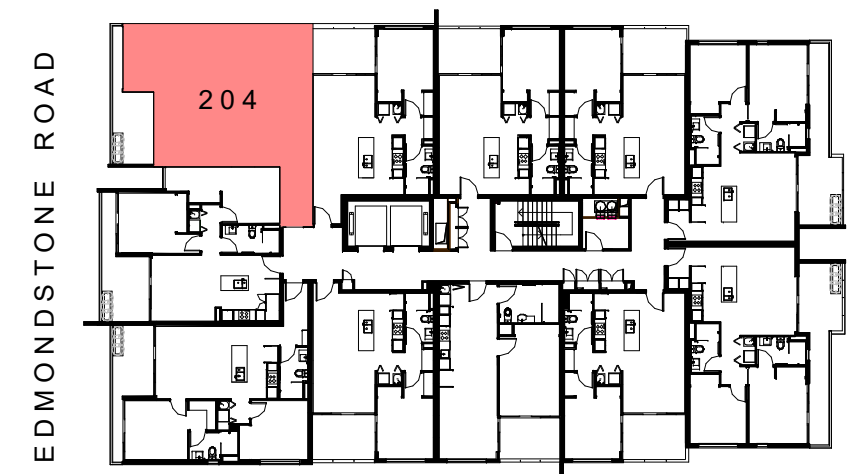


# PERRY HOUSE



APARTMENT NO.	FLOOR AREA	BALCONY	TOTAL
APART. 204	72.1m <sup>2</sup>	11m <sup>2</sup>	83.1m <sup>2</sup>
APART. 304	72.1m <sup>2</sup>	11m <sup>2</sup>	83.1m <sup>2</sup>
APART. 404	72.1m <sup>2</sup>	11m <sup>2</sup>	83.1m <sup>2</sup>
APART. 504	72.1m <sup>2</sup>	11m <sup>2</sup>	83.1m <sup>2</sup>
APART. 604	72.1m <sup>2</sup>	11m <sup>2</sup>	83.1m <sup>2</sup>
APART. 704	72.1m <sup>2</sup>	11m <sup>2</sup>	83.1m <sup>2</sup>



Key Plan N  
LEVEL 2-4

Apartment Type	Configuration
<b>TYPE 2B-8</b>	<b>2 bed, 2 bath</b>
Legend	
DW - Dishwasher F - Fridge Cavity L - Laundry	LIN - Linen P - Pantry R - Robe WO - Wall Oven
Scale	
0 1 2 3 4 5	

**Pellicano**  
LIVING

Disclaimer: While every care been taken in the preparation of this plan, the particulars and information in it are not to be constructed as containing any representation upon which an interested party is entitled to rely. All illustrations, drawing and photographs are for professional presentation purposes, are indicative only and not necessarily to scale. All information and material is subject to change without notice. All furniture is shown to indicate special arrangements only, and is not to be provided by the developer. Areas calculated according to Property Council of Australia 'method of measurement for residential property'.