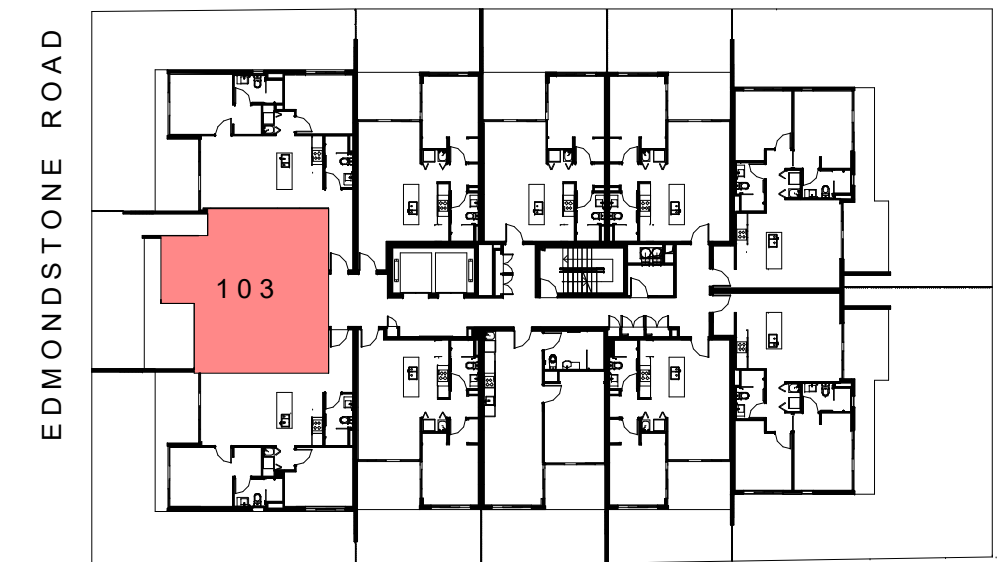
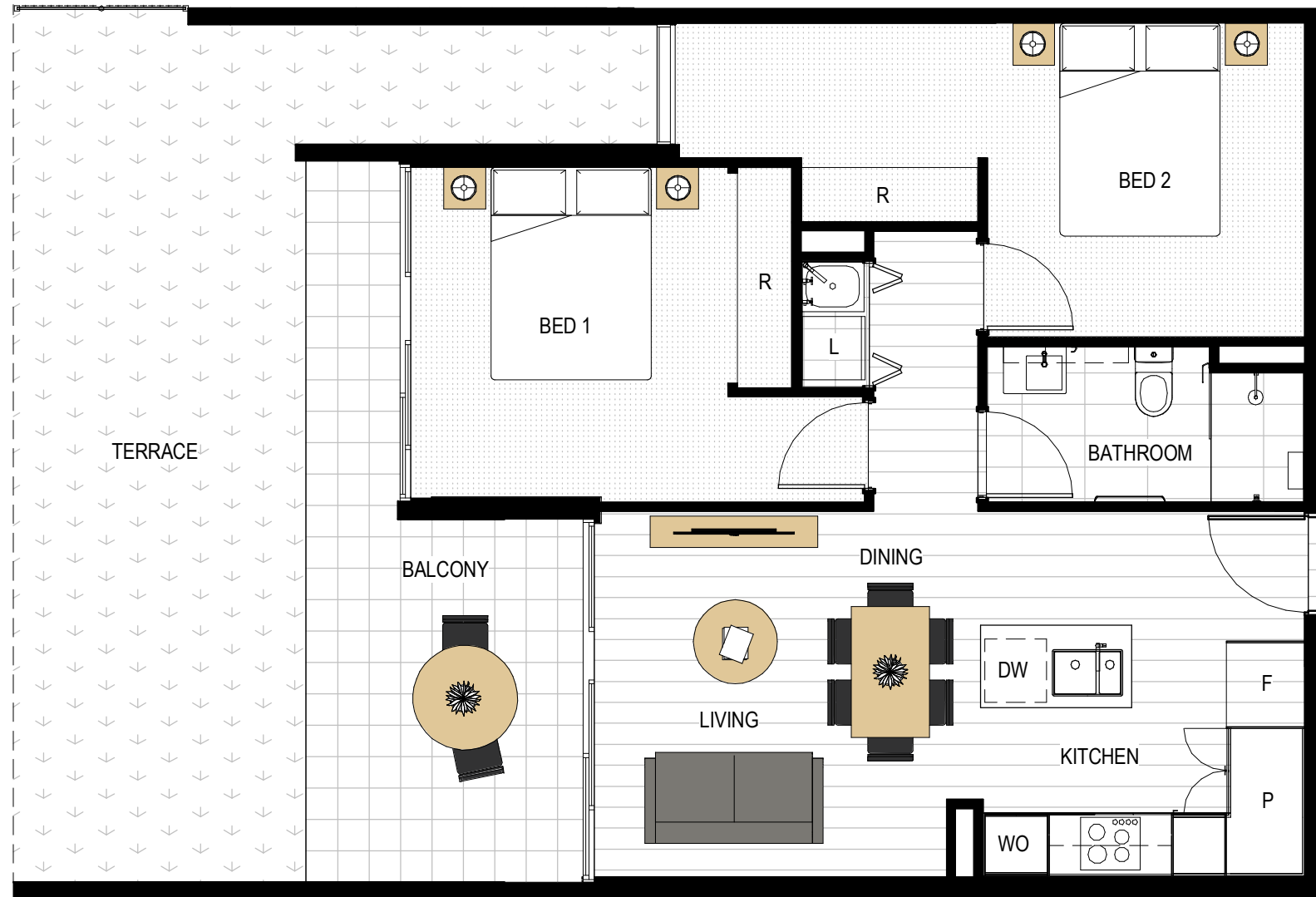


# PERRY HOUSE

| APARTMENT NO. | FLOOR AREA         | BALCONY          | TERRACE            | TOTAL               |
|---------------|--------------------|------------------|--------------------|---------------------|
| APART. 103    | 63.9m <sup>2</sup> | 13m <sup>2</sup> | 39.3m <sup>2</sup> | 116.2m <sup>2</sup> |



Key Plan LEVEL 1

|   |   |
|---|---|
| Apartment Type                                      | Configuration   |
| <b>TYPE 2B-2</b>                                    | <b>2 bed, 1 bath</b>                                    |
| Legend  |   |
| DW - Dishwasher<br>F - Fridge Cavity<br>L - Laundry | LIN - Linen<br>P - Pantry<br>R - Robe<br>WO - Wall Oven |
| Scale   |   |
| 0 1 2 3 4 5   |   |



Disclaimer: While every care been taken in the preparation of this plan, the particulars and information in it are not to be construed as containing any representation upon which an interested party is entitled to rely. All illustrations, drawing and photographs are for professional presentation purposes, are indicative only and not necessarily to scale. All information and material is subject to change without notice. All furniture is shown to indicate special arrangements only, and is not to be provided by the developer. Areas calculated according to Property Council of Australia 'method of measurement for residential property'.